

THE R2-D2 BUILDERS CLUB

R2.0

WWW.ASTROMECH.NET

What is R2.0?

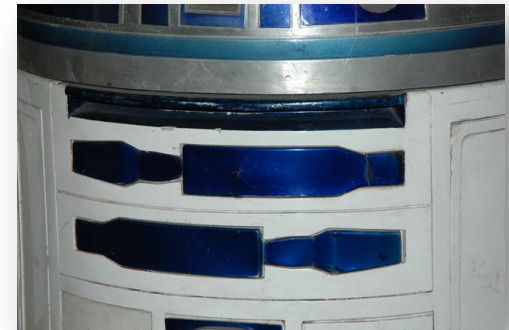
It all Starts with Dave Everett

Styrene Plans Reveal a Change



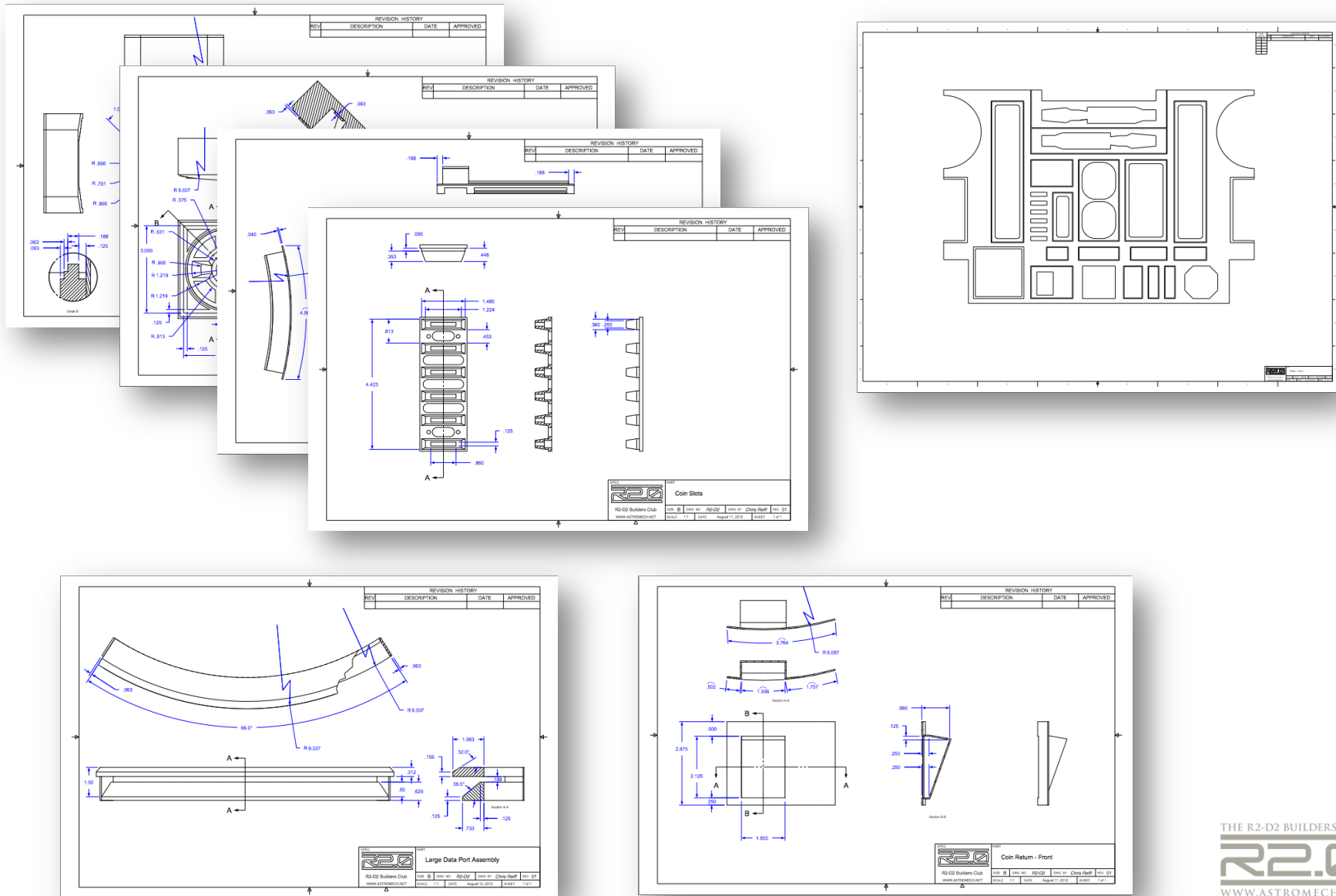
Dave's *Not-Quite-So-Large* Data Port

- Club Spec calls for a 1.180" tall data port
- Styrene Plans call for a 1" tall data port
- New Dimensions confirmed in reference
- Also found in production blueprints



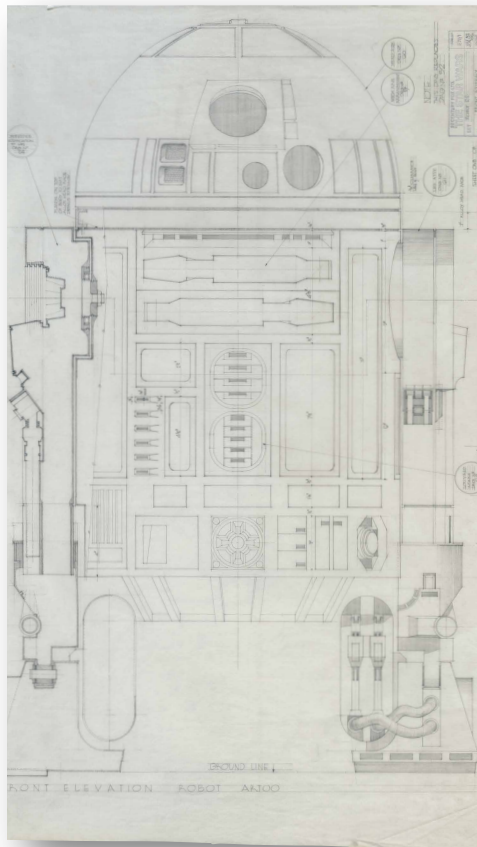
When the Large Data Port is 1", other dimensions of the body must follow....

A Designated Set of Plans



Created Using Available Data:

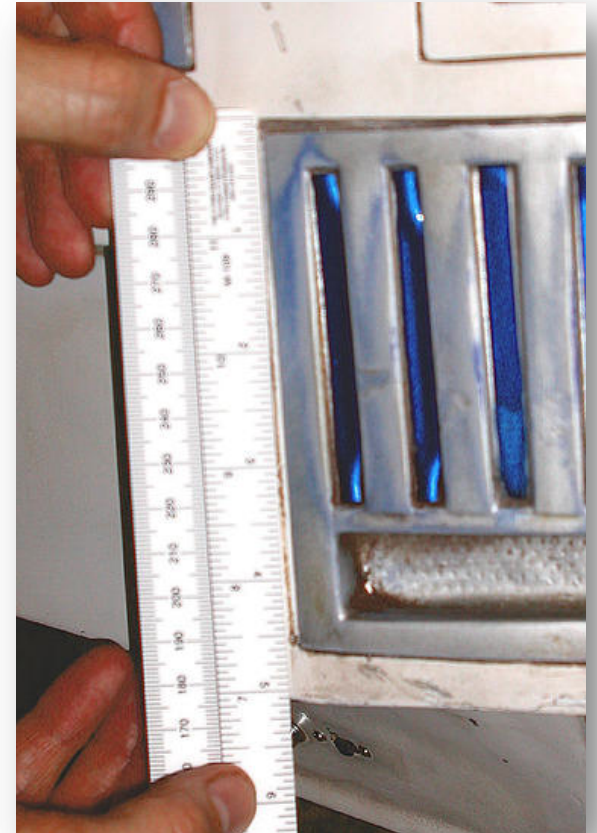
Original Blueprints



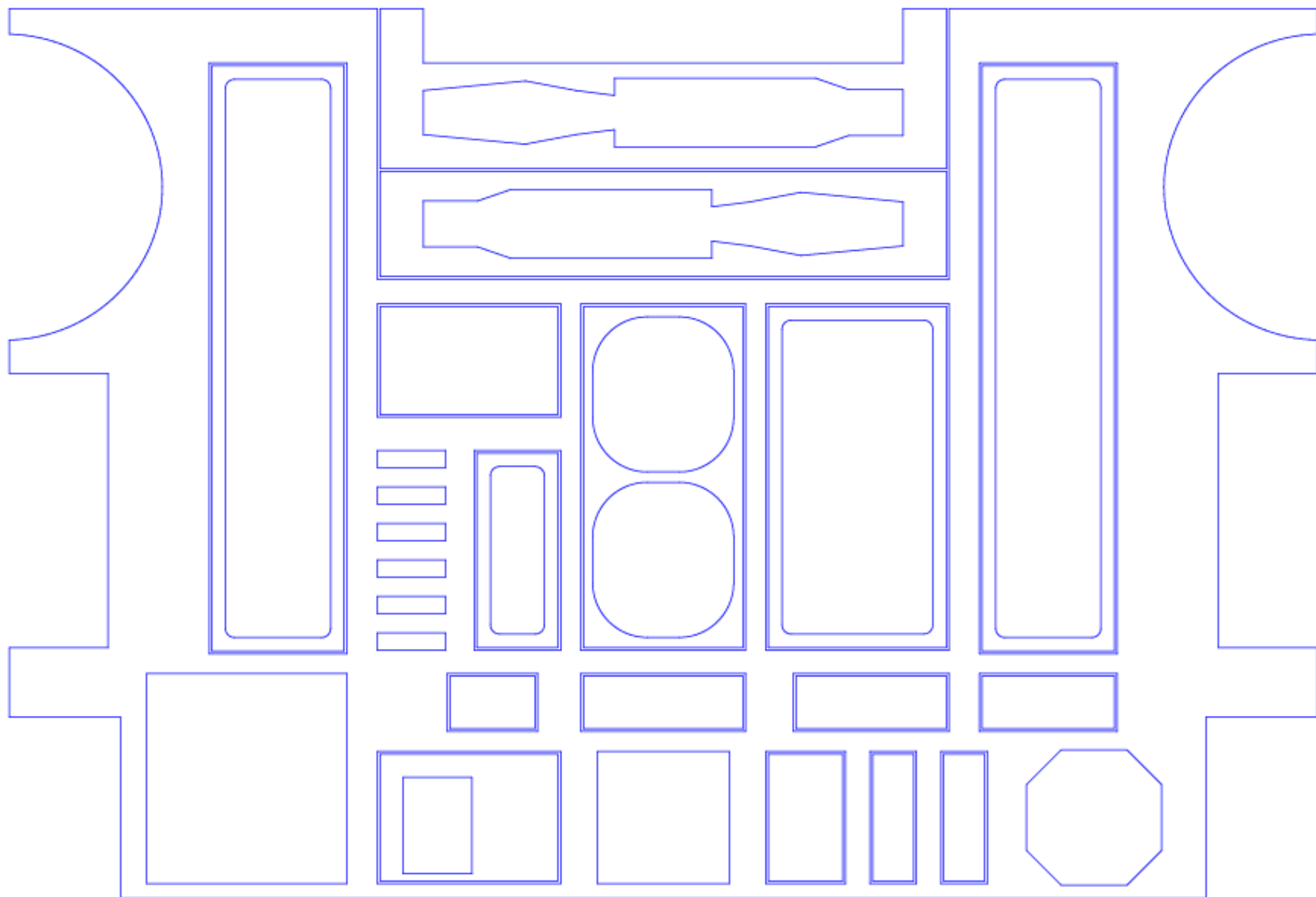
Film Reference



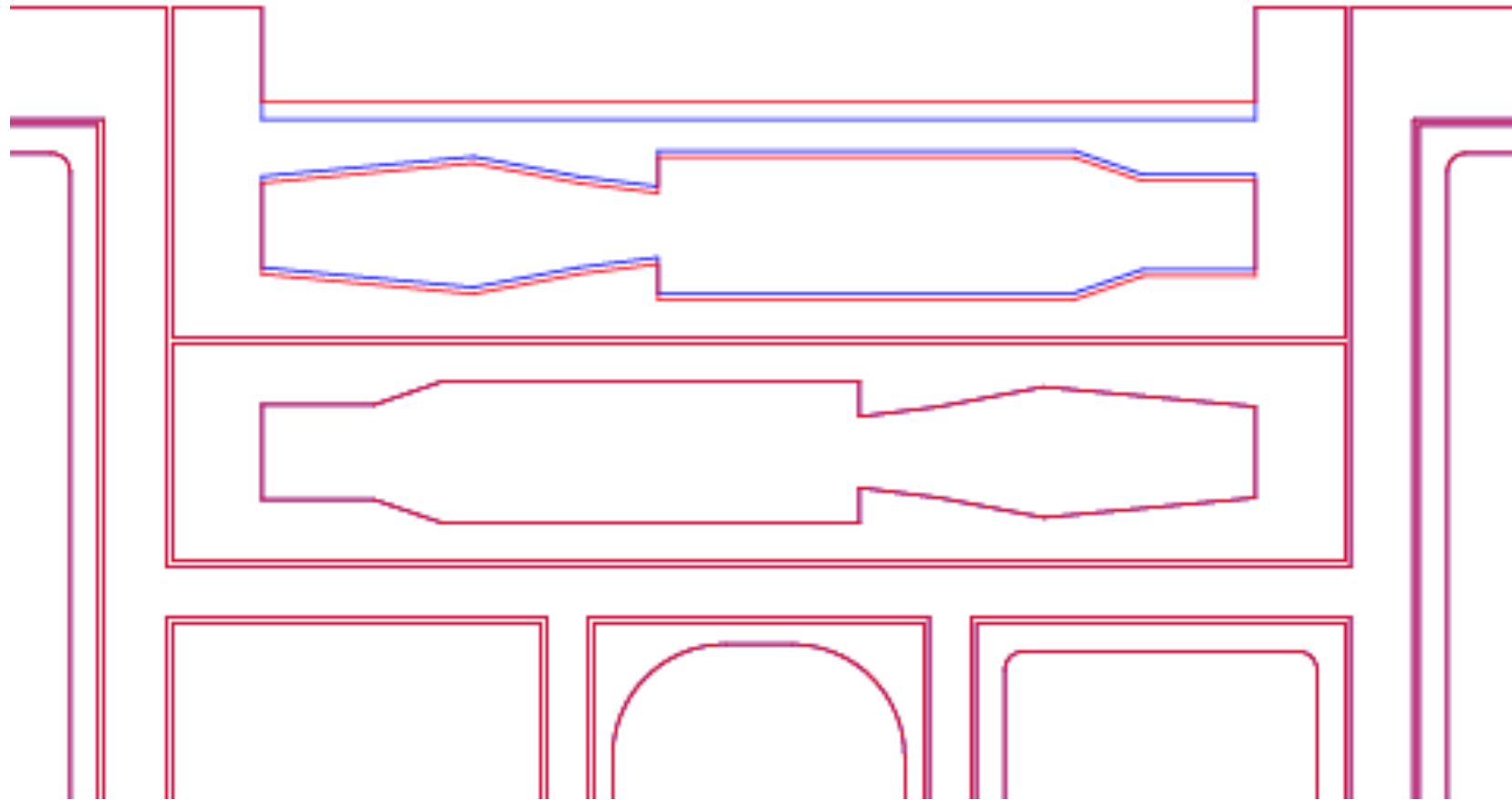
Club Reference



Skins - Club Spec

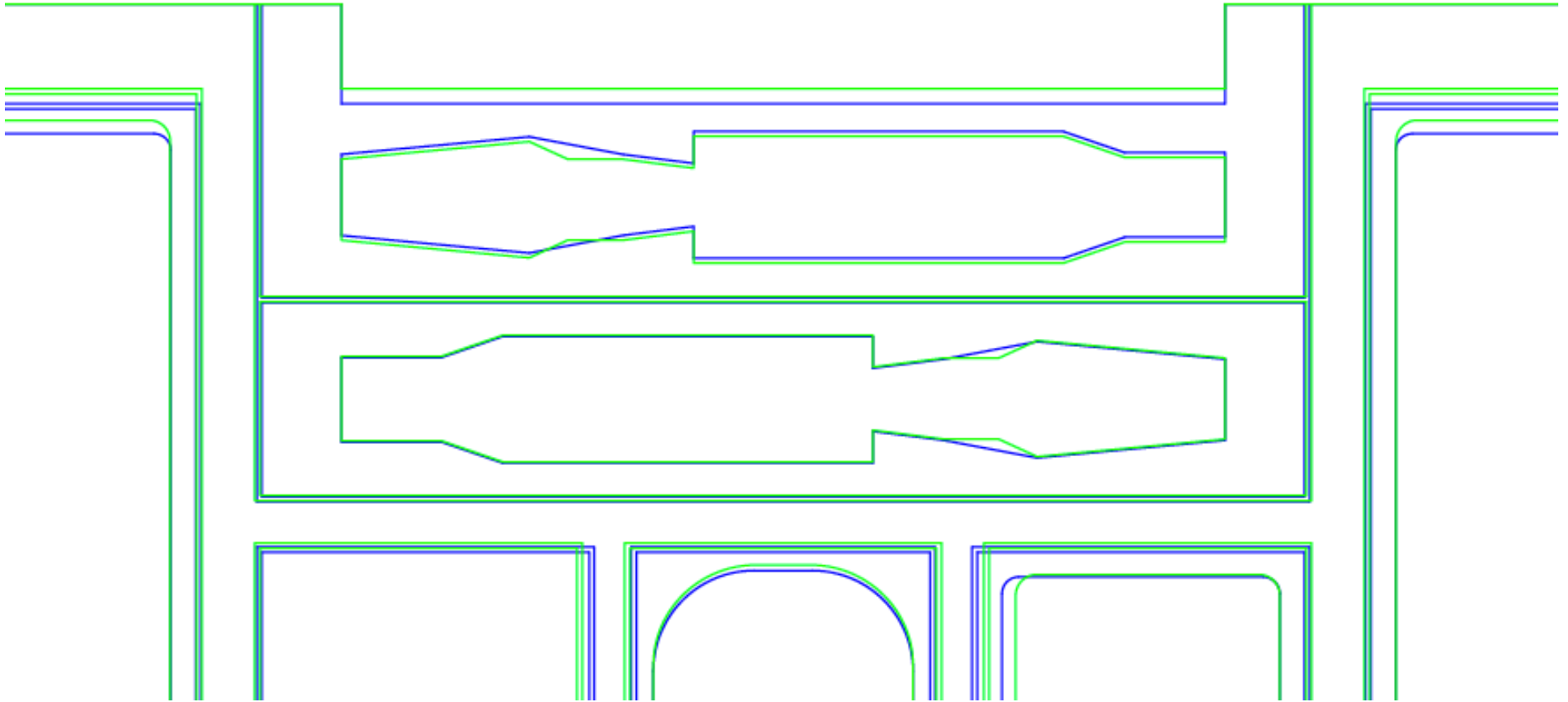


Skins - Club Spec vs. Styrene Plans



What's new in R2.0?

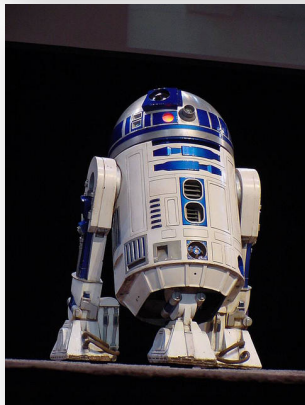
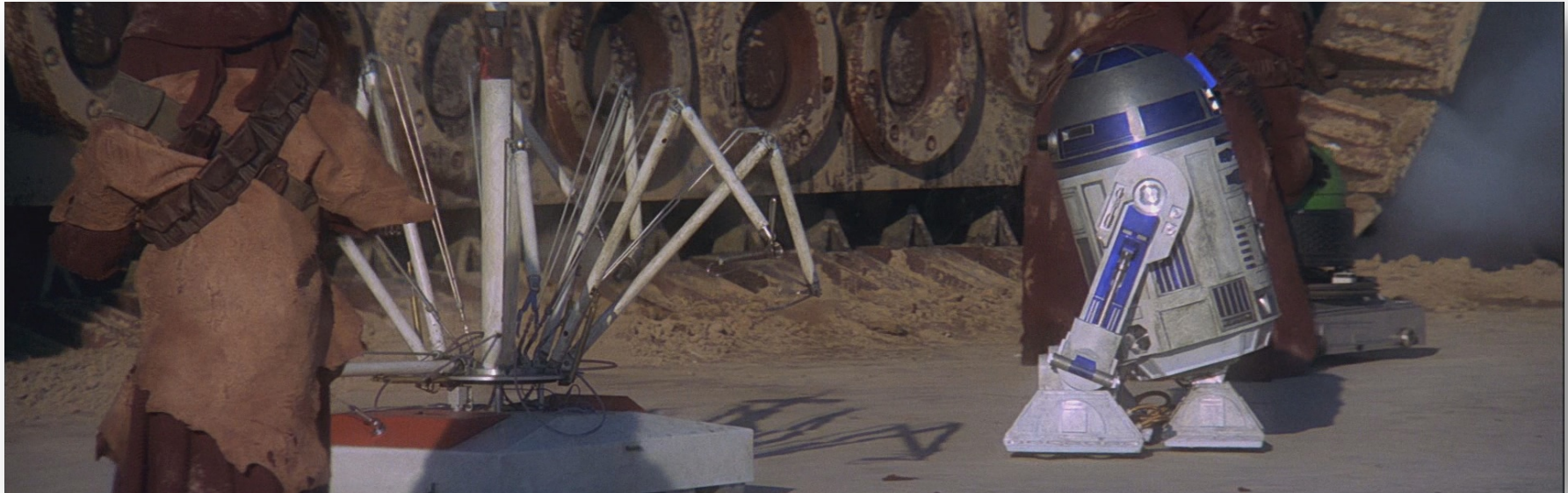
Skins - Club Spec vs. R2.0



The Ankle Cylinder Conundrum

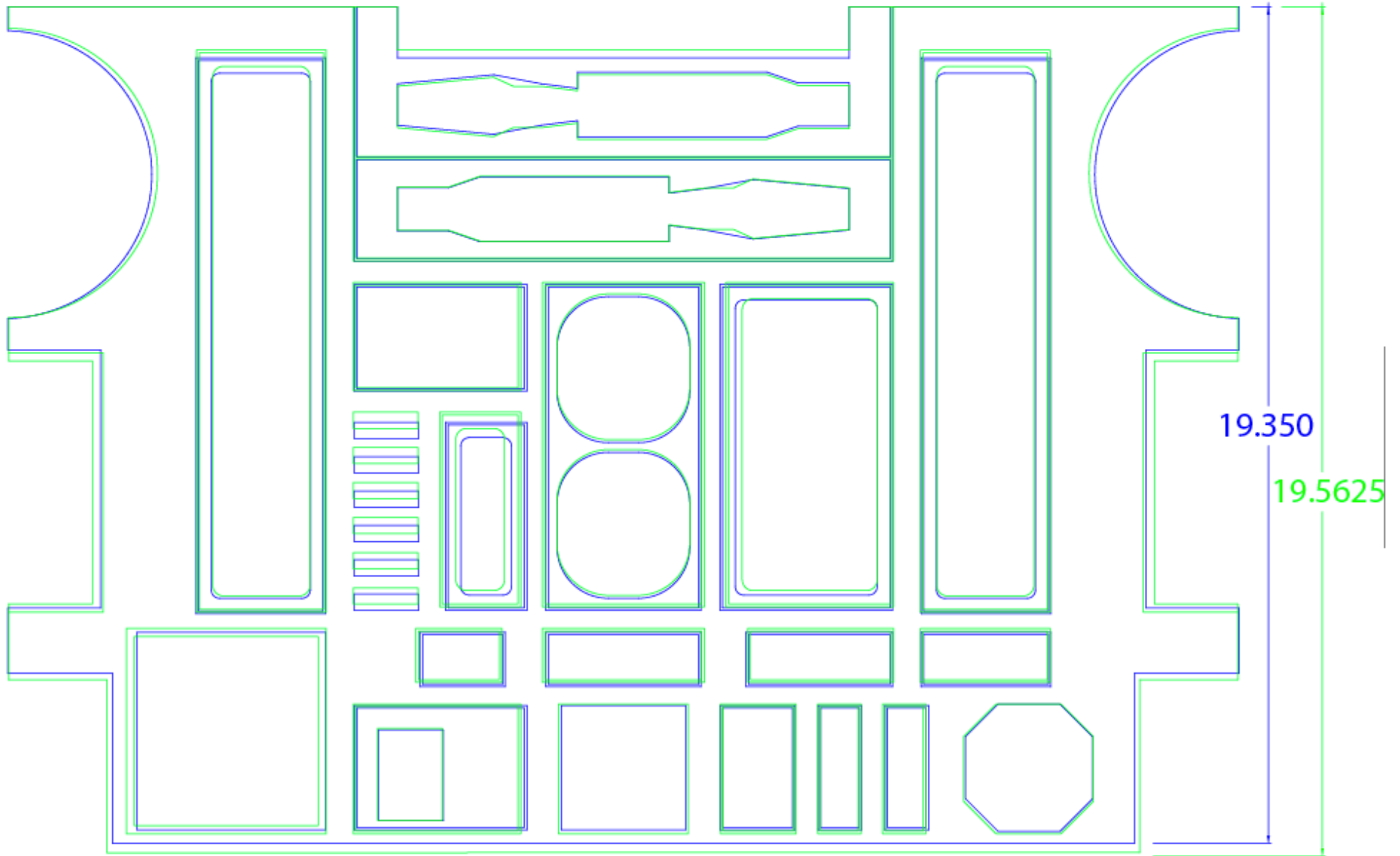
Center Ankle lengths can vary from droid to droid.

Most movie ankles have cylinders that stick out of the skirt a little more than half way.

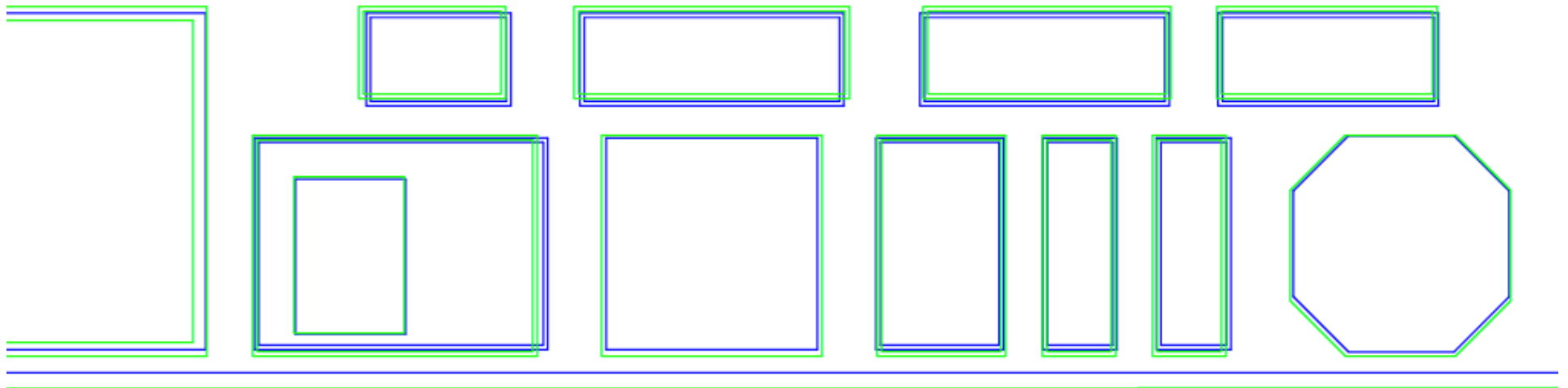


Current body dimensions make this impossible while also maintaining the body angle. Our droids almost universally have center ankle cylinders that stick completely out from under the skirt.

Skins - Club Spec vs. R2.0

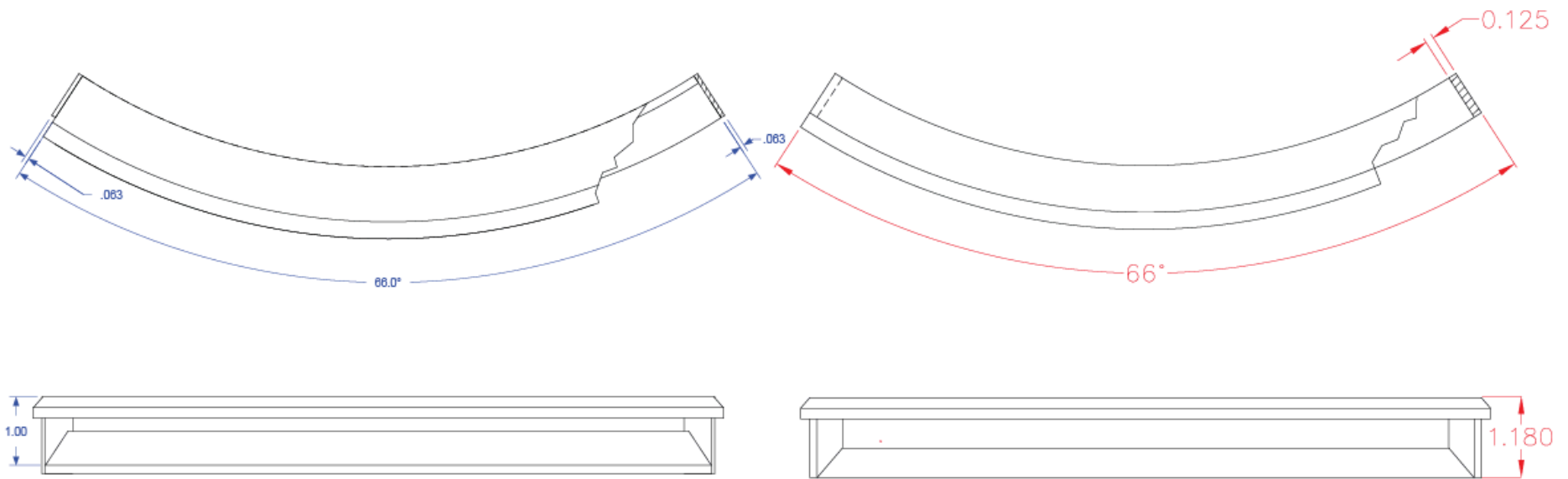


Skins - Club Spec vs. R2.0

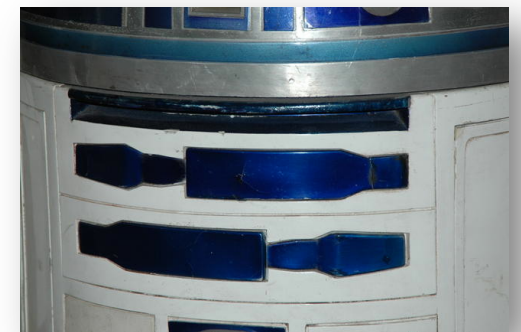


The Parts

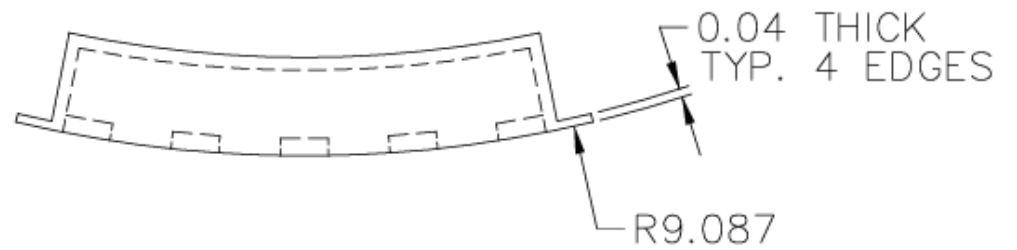
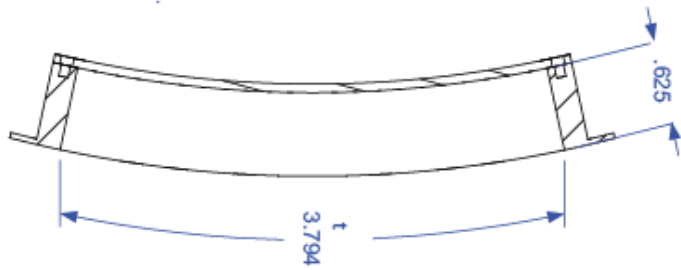
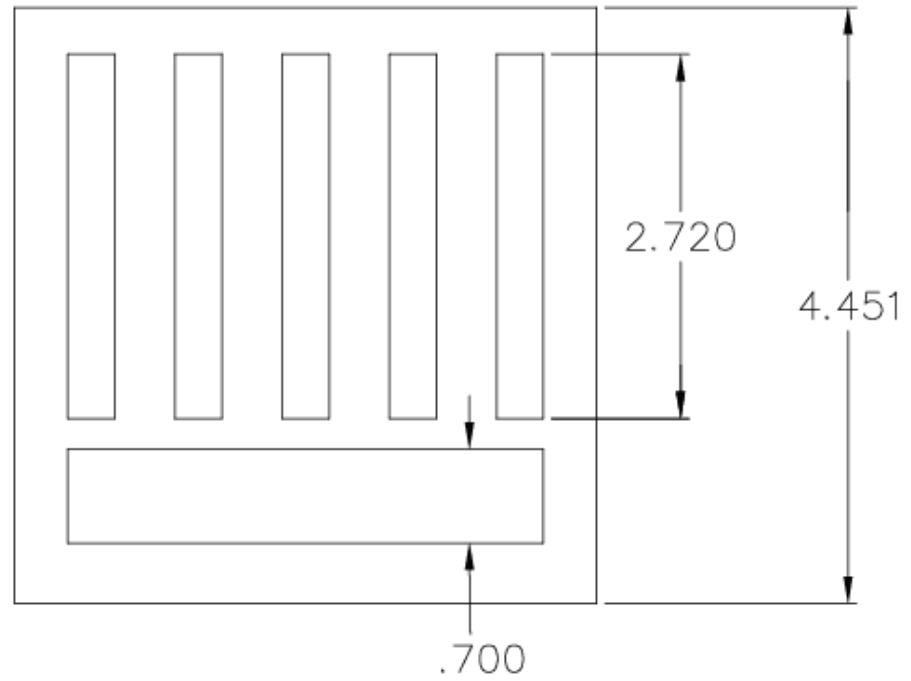
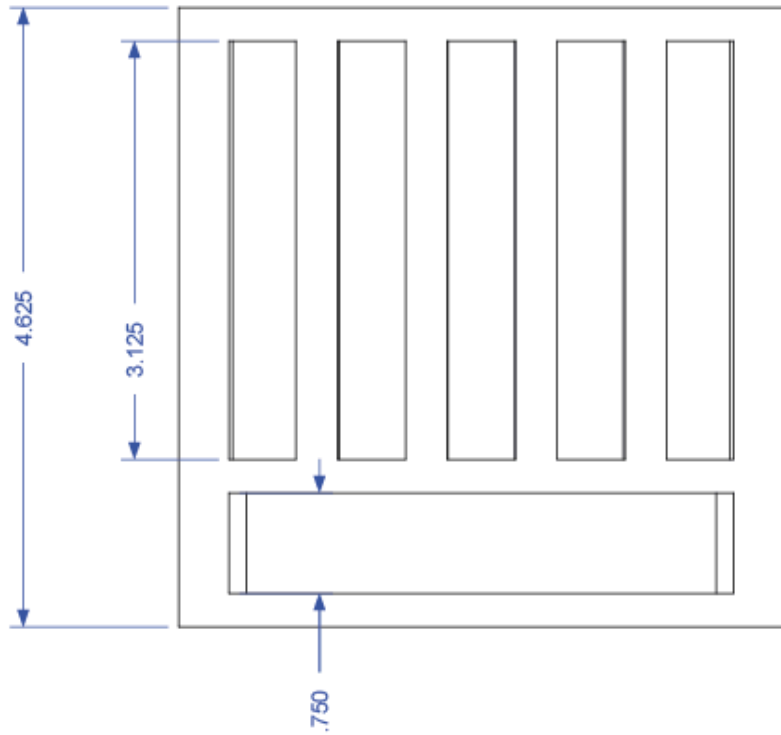
Large Data Port Comparison



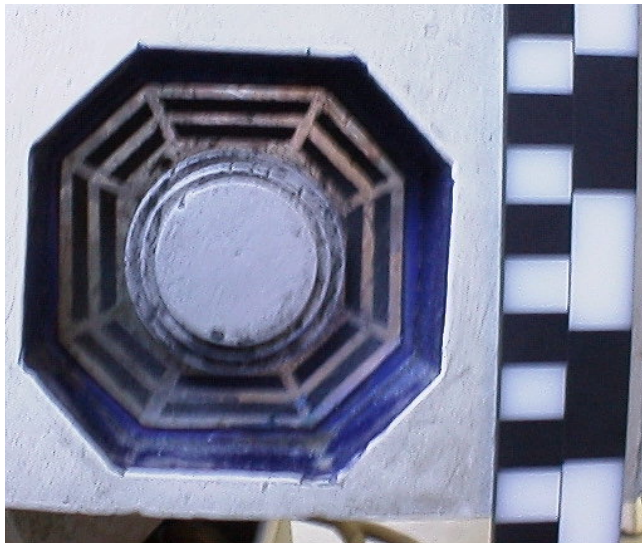
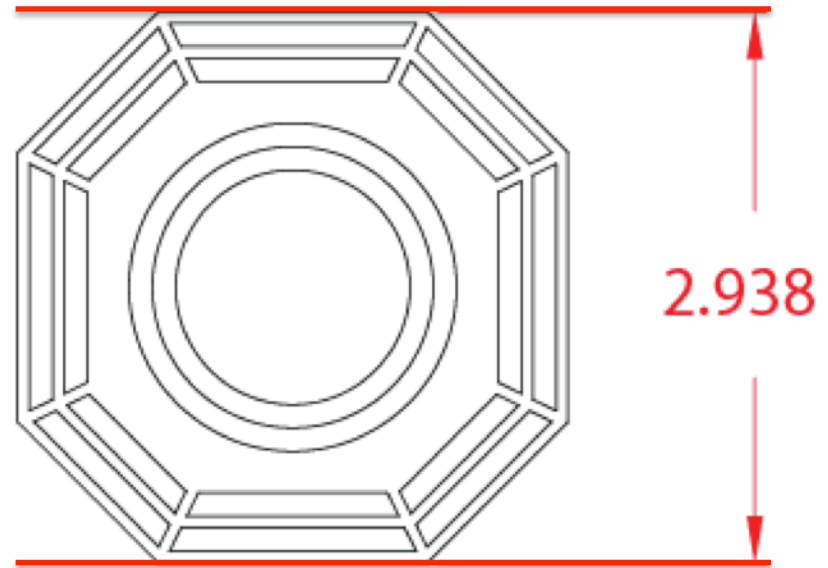
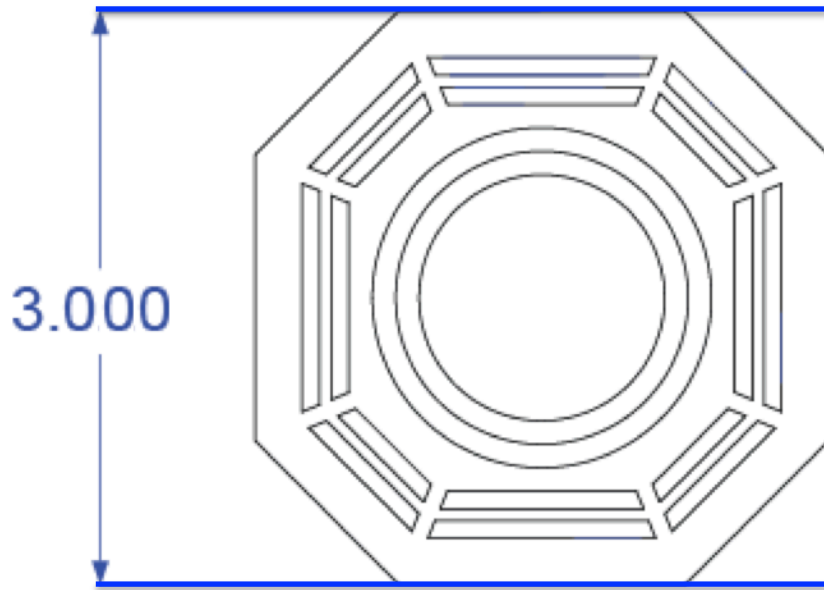
	R2.0	Club Spec
Overall Height	1"	1.18"
Overall Length	66 Degrees	66 Degrees
Side Wall	Not Visible from Front	Visible from Front



Pocket Vent Comparison

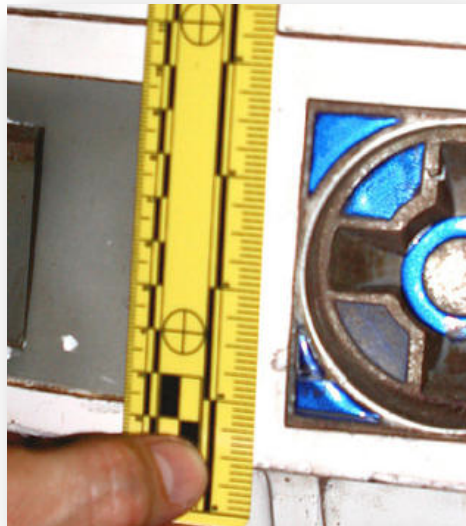
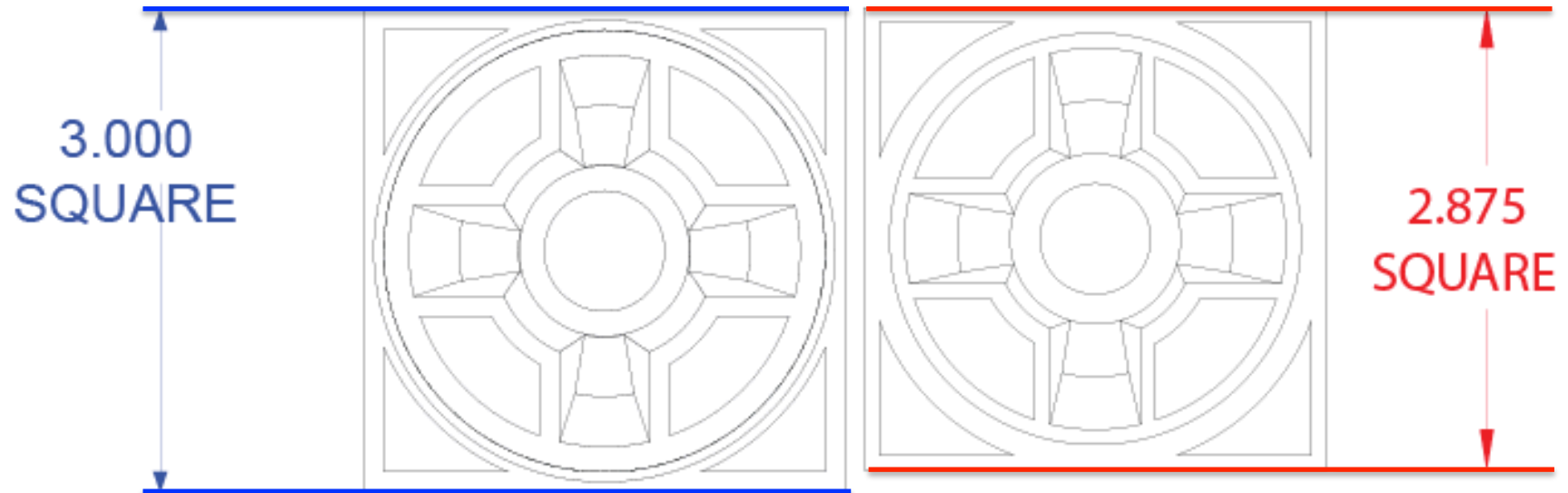


Octagon port Comparison



Confirmed via reference

Power Coupler Comparison



*Confirmed via ILM Uber Droid
reference, available on
Astromech.net*

Frequently Asked Questions

- What changes are made in R2.0?
 - The skin layout moved many panels and changed the dimensions of five parts
 - R2.0 Skins Require these specific parts:
 - R2.0 Large Data Port
 - R2.0 Power Couplers
 - R2.0 Octagon Ports
 - R2.0 Pocket Vents
 - R2.0 Coin Returns
 - Some parts require slight modification
 - Coin Slots
 - Frame
 - Other parts remain unchanged
 - Side Vents
 - Center Vents
 - Vent Internals
 - Skirt
 - Shoulder Hubs
 - Utility Arms
 - Body Diameter
- Would R2.0 skins fit on my frame?
 - Since the R2.0 plans call for a slightly longer overall body, you might need to extend your frame. This could be done using a few washers, spacers, or new vertical uprights.
- What modifications are needed for the coin slots?
 - The spacing between each of the coin slots is different on R2.0 skins. You might have to cut the slots apart and re-mount them to fit. The external features are unchanged.

Frequently Asked Questions (cont.)

- Are the R2.0 Dimensions found in all the movies?
 - Yes, we've found droids in every movie that have reference points matching the R2.0 drawings
- Are plans available now?
 - Yes, they are available now.
- Where did the new plans come from?
 - The plans were created by studying film reference, original production blueprints, and the measured reference on Astromech.net
- Aren't the 20th Century Fox blueprints incorrect?
 - There are elements of the blueprints that did not make it to the screen, but the dimensions are found in the final production props in all six films.
 - Some parts (particularly the feet and center ankles) were changed when molded in fiberglass for *Empire Strikes Back*. Parts were mixed and matched in future movies. Some accurate elements had been largely ignored by the club for years, despite being clearly shown in the blueprints.
 - The release of *Star Wars: The Blueprints* gives us additional looks and history behind the drawings

Frequently Asked Questions (cont.)

- Why bother with these slight differences?
 - We did not set out to change anything but once we began to build to the available reference, new dimensions came to light. R2.0 is a way that we can share the information with all builders in the club and easily differentiate.
 - The R2 Builders Club Drawings have continually changed over the years.
 - The spirit of the club is all about building, It's up to the individual builder to decide how they want to build their droid
 - When new information comes to light that information is shared within the group
 - Innovation happens everyday in the R2 Builders Club! (We love you Bob Ross!)
- Is R2.0 going to confuse new members?
 - R2.0 is a way that builders can easily distinguish between R2.0 body plans and previous body plans.
 - This information can be readily available in the new members area and will specified easily in the builders group forums.

Frequently Asked Questions (cont.)

- Basically when a builder uses R2.0 Skin plans they will also build these Five parts to R2.0 Spec:
 - R2.0 Large Data Port
 - R2.0 Power Couplers
 - R2.0 Octagon Ports
 - R2.0 Pocket Vents
 - R2.0 Coin Returns

Special Thanks

Dave Everett
Jerry Greene
Steve Mays
Paul Bussiere
Bob Considine
Chris James
David Shaw
Tom Doucet
Paul Murphy
Mike Senna
James Van Reenen
Bryan Stubblefield
Greg Tracy
Wayne Orr

Kevin Carroll
Christian Dohn
Guy Vardaman
Kristine and Zach Spencer
Mike Hayes
David Eppler
Al Eisenmann
Chad Castle
Oscar Banos
Drew Perry
Ryan Huffman
Josh Haldeman
Ken Koncelik
Thompson Metals
Roboteq