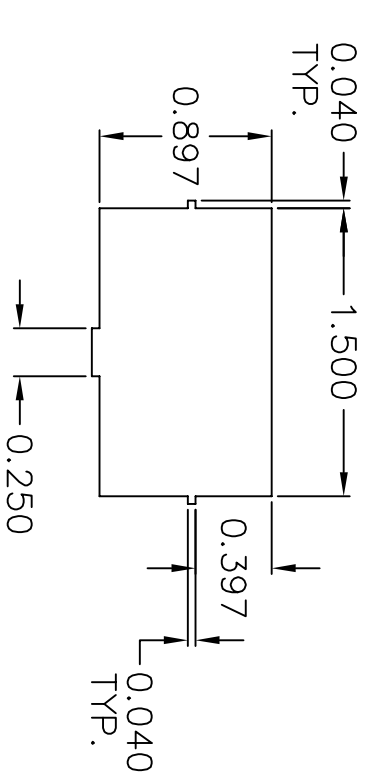
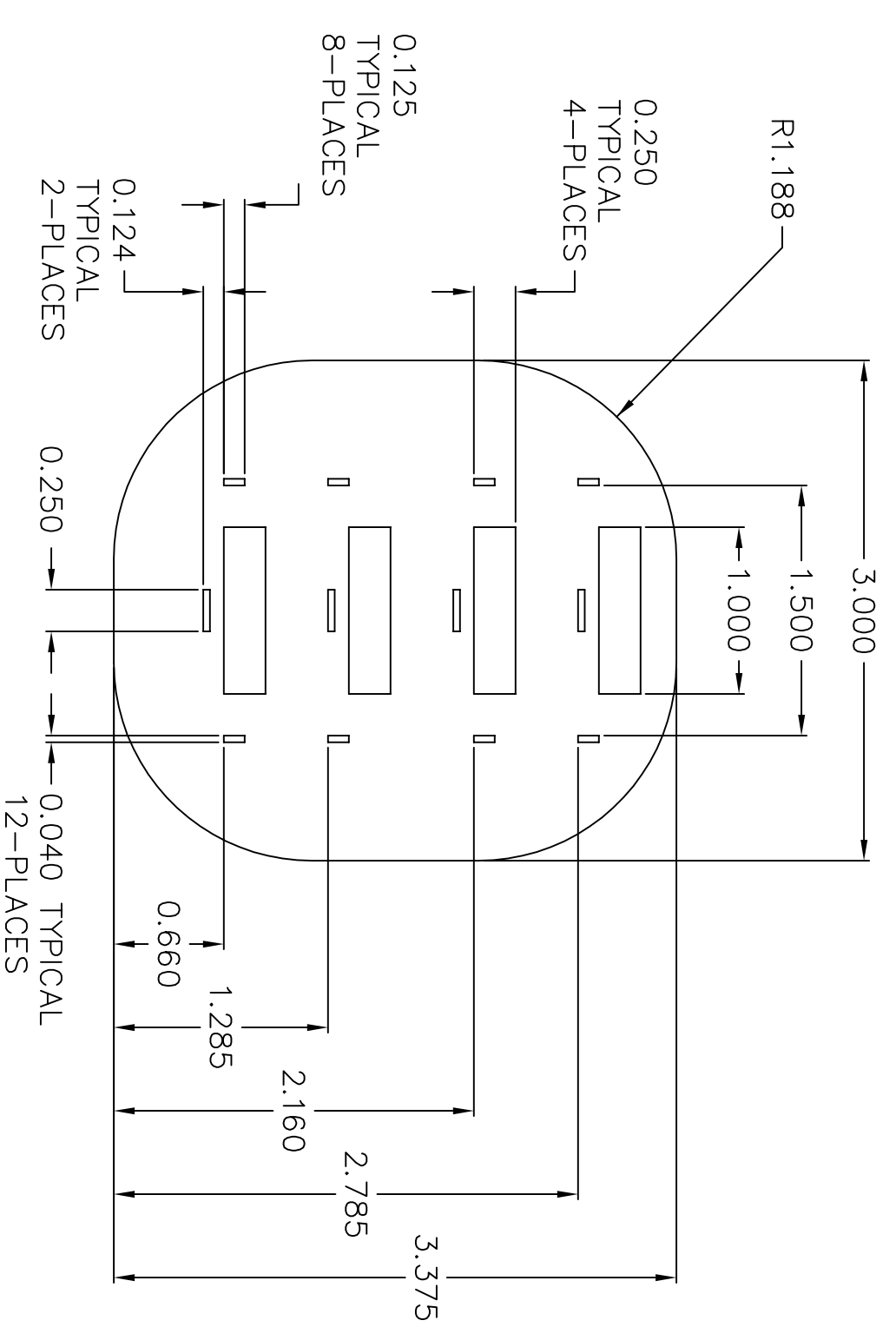
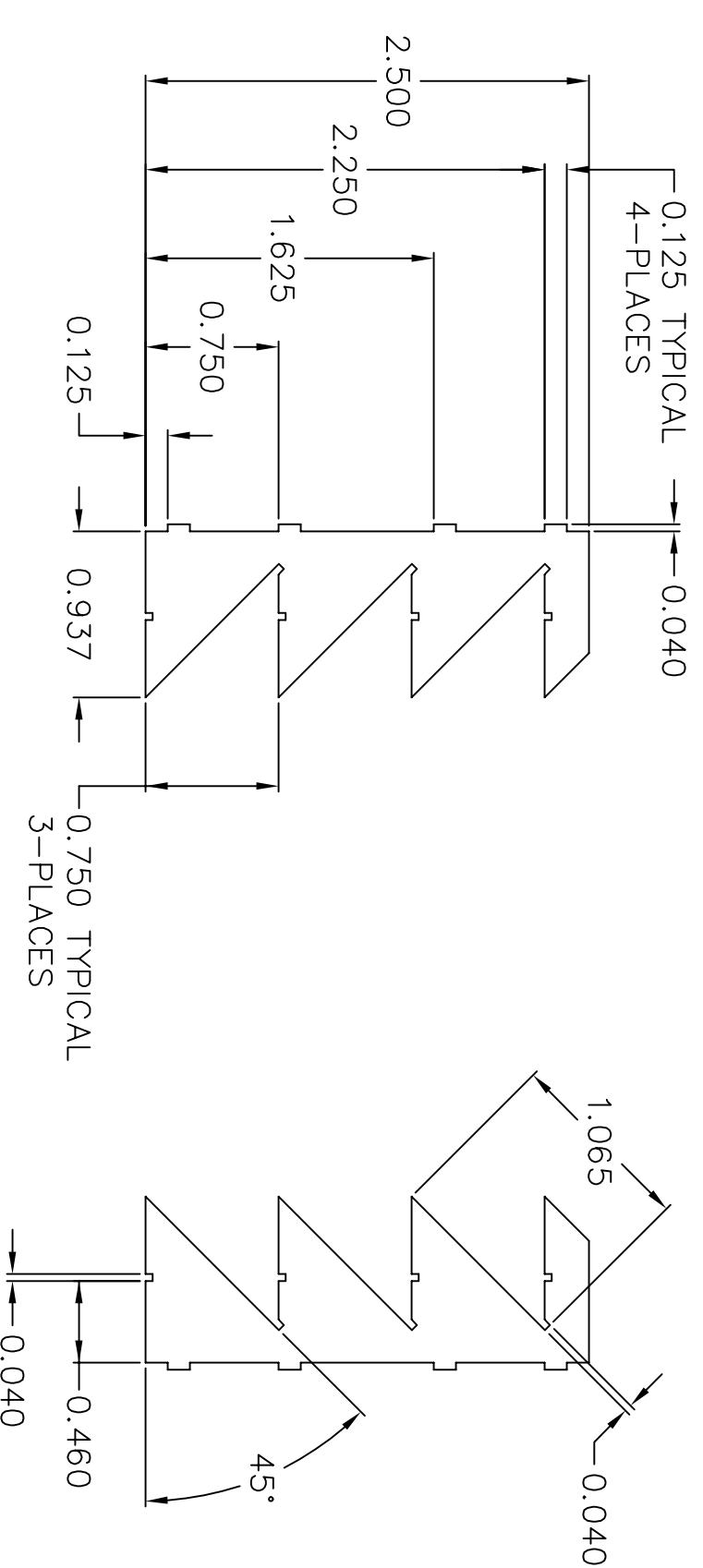
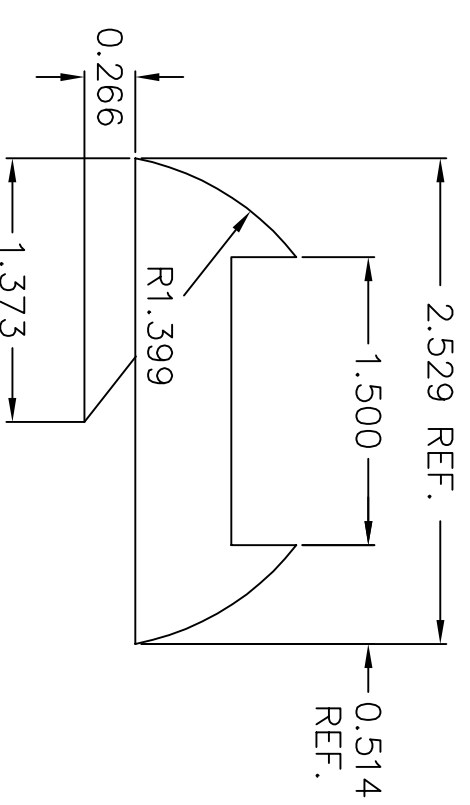
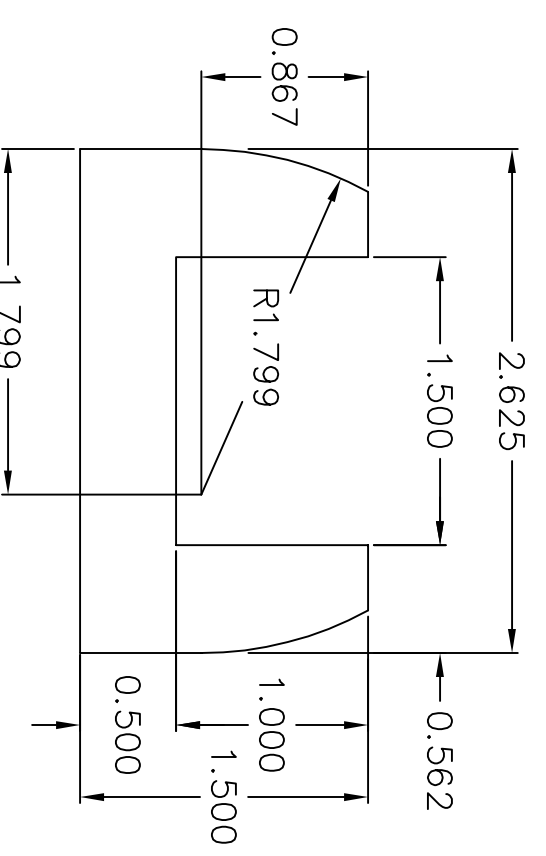
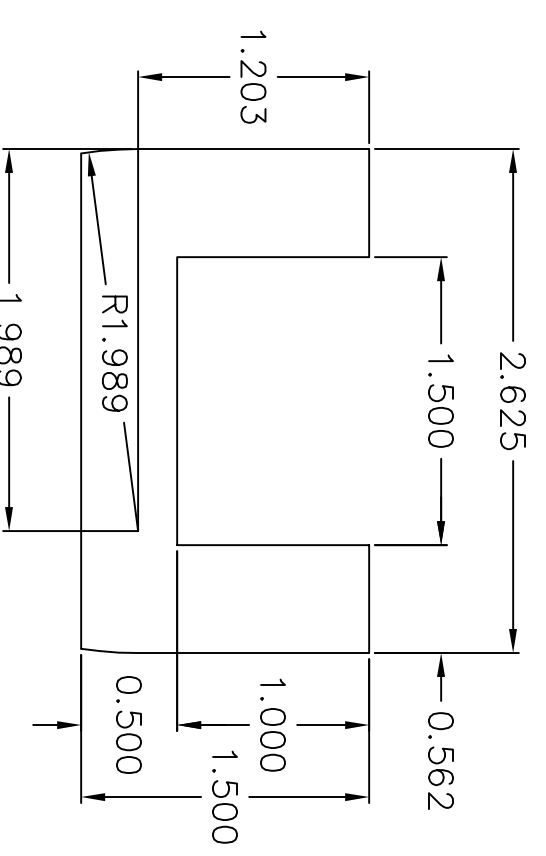
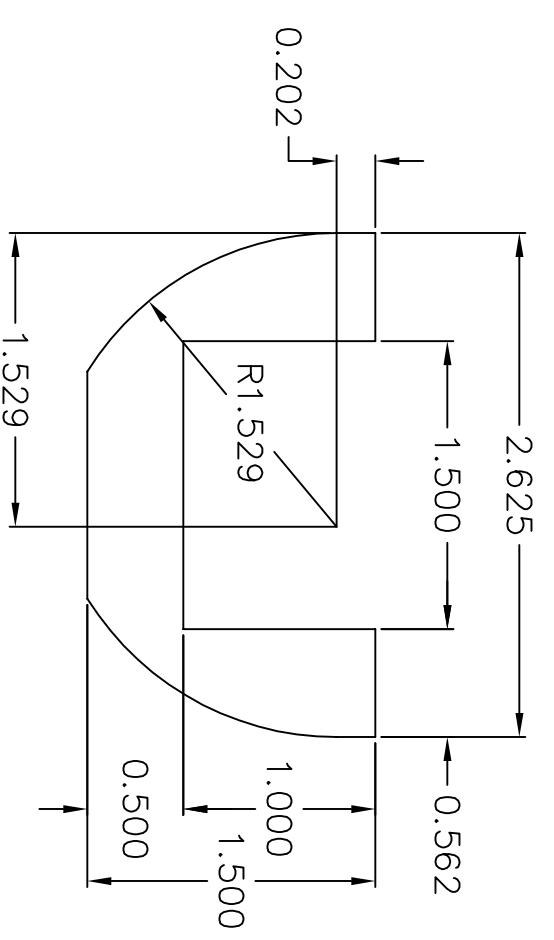
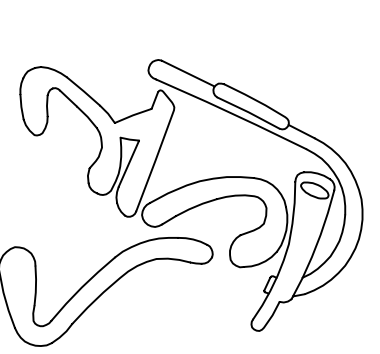


NOTE: MATL 0.039 INCH THICK.



1/8"	1"
3/16"	1/2"
1/4"	



VENT INTERNALS
FRONT, UPPER

R2-D2 BUILDERS CLUB

DRAWING NO.

ASTROMECH DROID A

REV.

SCALE: FULL

DRAWN: APRIL 2005

SHEET: 1 OF 1